



# LOGIQ 9 & 7 series

## Transducer guide

Leading edge innovation is our design promise.

GE Healthcare offers ultrasound transducers for a broad variety of applications – empowering you to easily make the most of the breakthrough technology available on your LOGIQ® 9 or LOGIQ 7 ultrasound system.

Every design decision is made with patient and user comfort in mind, to reduce stress without compromising diagnostic performance. Matrix array transducers allow you to achieve uniform resolution throughout the field of view, which diminishes compromises needed between penetration and resolution. With GE's 4D capability, we provide the most advanced 4D transducers to make volumetric imaging easy with lightweight ergonomic transducers. And with the introduction of the lightweight 4C and 9L probes, 2D probe design has been taken to the next level of ergonomics.

Choose from these transducers to meet your clinical needs.



## 4D



4D16L



4D10L



4D3C



4D8C



4DE7C

Applications	Footprint	Bandwidth	FOV	Biopsy Guide	Availability
Small Parts, Peripheral Vascular, Pediatrics, Musculoskeletal	50 x 58 mm	4.5 - 16.0 MHz	37.4 mm Volume: 37.4 mm x 29°	n/a	LOGIQ 9
Small Parts, Peripheral Vascular, Pediatrics	50 x 58 mm	3.5 - 11.0 MHz	37.4 mm Volume: 37.4 mm x 29°	Single angle reusable*	LOGIQ 9, LOGIQ 7
Abdomen, OB/GYN	53 x 41 mm	2.0 - 5.0 MHz	68° Volume: 85° x 80°	Single angle reusable*	LOGIQ 9, LOGIQ 7
Neonatal, Pediatrics	32 x 29 mm	3.5 - 9.0 MHz	120° Volume: 120° x 90°	n/a	LOGIQ 9
OB/GYN, Urology	32 x 27 mm	3.5 - 10.0 MHz	116° Volume: 146° x 90°	n/a	LOGIQ 9

\*only available on LOGIQ 7

## Convex - Micro Convex



M7C (Matrix)



4C



3.5C



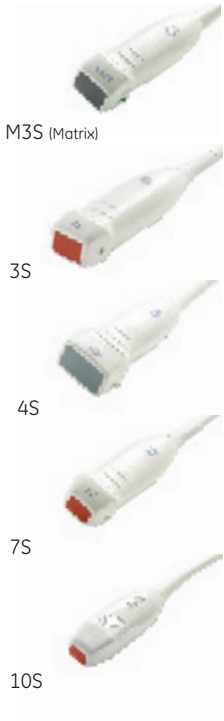
8C



E8C

Applications	Footprint	Bandwidth	FOV	Biopsy Guide	Availability
Abdomen, OB/GYN, Pediatrics	58 x 18 mm	2.5 - 8.0 MHz	62°	Multi angle reusable	LOGIQ 9, LOGIQ 7
Abdomen, OB/GYN, Vascular, Urology	61 x 17 mm	1.5 - 4.5 MHz	58°	Multi angle reusable	LOGIQ 9, LOGIQ 7
Abdomen, OB/GYN, Vascular, Urology	52 x 17 mm	2.0 - 5.0 MHz	68°	Single angle reusable	LOGIQ 9, LOGIQ 7
Pediatric, Neonatal	30 x 9 mm	3.5 - 11.5 MHz	133°	n/a	LOGIQ 9, LOGIQ 7
OB/GYN, Urology	30 x 9 mm	3.5 - 11.5 MHz	133°	Single angle, disposable, reusable	LOGIQ 9, LOGIQ 7

## Phased array



Applications	Footprint	Bandwidth	FOV	Biopsy Guide	Availability
Cardiac, Transcranial, Abdomen	24 x 17 mm	1.5 - 4.0 MHz	90°	Multi angle reusable	LOGIQ 7
Cardiac, Abdomen, Transcranial	21 x 15 mm	1.5 - 3.5 MHz	90°	Multi angle reusable*	LOGIQ 9, LOGIQ 7
Abdomen, OB/GYN, Transcranial,	32 x 18 mm	1.5 - 5.0 MHz	90°	Multi angle reusable	LOGIQ 9
Cardiac, Abdomen	18 x 12 mm	3.0 - 9.0 MHz	90°	n/a	LOGIQ 7
Small Parts, Abdomen, Neonatal, Pediatrics	14 x 10 mm	4.0 - 10.5 MHz	90°	n/a	LOGIQ 9, LOGIQ 7

\*only available on LOGIQ 7

## Linear



Applications	Footprint	Bandwidth	FOV	Biopsy Guide	Availability
Small Parts, Vascular, Neonatal, Pediatrics	45 x 10 mm	5.0 - 13.0 MHz	39 mm	Multi angle reusable	LOGIQ 9, LOGIQ 7
Small Parts, Vascular, Pediatric	49 x 9.0 mm	2.5 - 8.0 MHz	44 mm	N/A	LOGIQ 9
Small Parts, Vascular, Pediatric	53 x 11 mm	2.5 - 7.0 MHz	46 mm	Multi angle reusable	LOGIQ 9, LOGIQ 7
Small Parts, Vascular, Neonatal, Pediatrics	44 x 10 mm	3.5 - 9.5 MHz	39 mm	Multi angle reusable	LOGIQ 9, LOGIQ 7
Small Parts, Vascular, Neonatal, Pediatrics	44 x 10 mm	4.5 - 13.0 MHz	39 mm	Multi angle reusable	LOGIQ 7

# Specialty



Applications	Footprint	Bandwidth	FOV	Biopsy Kit	Availability
Urology	25 x 9 mm	3.5 - 11.0 MHz	126°	Single angle reusable	LOGIQ 7
Transesophageal (TEE)	n/a	3.0 - 7.0 MHz	90°	n/a	LOGIQ 7
Vascular	n/a	P2D: 2 MHz P6D: 5 MHz	n/a	n/a	LOGIQ 7
Intraoperative, Small Parts, Vascular, Pediatrics	29 x 10 mm	4.5 - 11.5 MHz	25 mm	n/a	LOGIQ 9 LOGIQ 7
Intraoperative, Small Parts, Vascular	44 x 10 mm	3.5 - 9.5 MHz	39 mm	n/a	LOGIQ 9
Intraoperative, Small Parts, Vascular	44 x 10 mm	3.5 - 9.5 MHz	39 mm	n/a	LOGIQ 9, LOGIQ 7

GE Healthcare  
Waukesha, WI U.S.A.  
888 202 5528  
[www.gehealthcare.com](http://www.gehealthcare.com)

©2005 General Electric Company – All rights reserved.  
GE Healthcare, a division of General Electric Company.

General Electric Company reserves the right to make changes in specifications and features shown herein, or discontinue the product described at any time without notice or obligation. Contact your GE Representative for the most current information.

General Electric Company, doing business as GE Healthcare.  
LOGIQ is a registered trademark of GE Healthcare.

