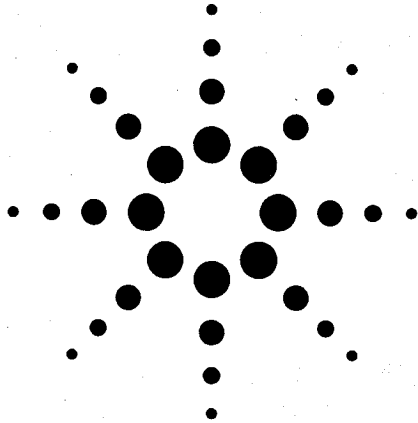


SONOS 5500

Ultrasound Imaging System

Data Sheet

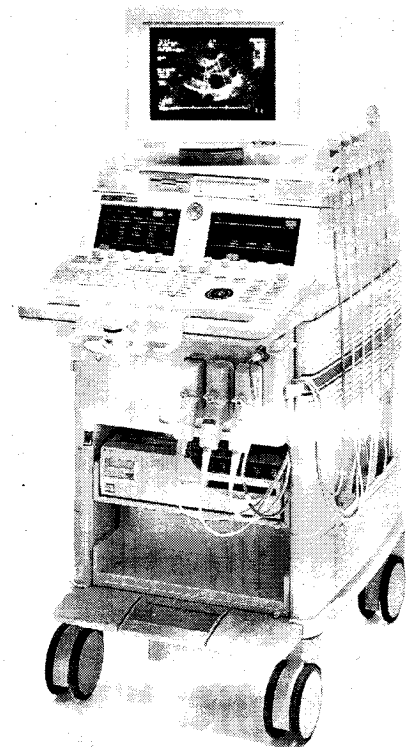


- 512-channel digital system
- Fusion Imaging with Adaptive Power
- Harmonic Fusion Imaging with Power Modulation
- Ultraband transducers (sector, linear array and curved linear array)
- s3 Ultraband transducer
 - 1.3/2.6; 1.6/3.2 MHz Harmonics
 - 1.3/3.6 MHz Ultraharmonics
- Comprehensive contrast capabilities for research and LVO:
 - Real-time MCE imaging with Power Modulation (optional)
 - Ultraharmonics and enhanced Harmonic Angio for triggered MCE imaging
 - LVO imaging with Power Modulation
 - Acoustic Densitometry
- Soft Echo Enhancement
- High-Definition Acoustic Zoom with flexible pan capability
- Color compare mode
- Full-screen and split-screen M-mode and Doppler spectral display
- Optional Acoustic Quantification, Color Kinesis, Dynamic Stress Echo, Integrated 3-D Acquisition
- DICOM print capability

**NEW miniMulti
TEE Transducer!**

For pediatric and
small adult patients

- 0-180 degree rotation
- 4.0/7.0 MHz



Agilent Technologies